

## ACCIDENTAL EXPOSURE TO RECENTLY SPRAYED LAWNS AND GREEN SPACES CAN POISON PETS!!!

Pets are vulnerable to pesticides applied on lawns because:



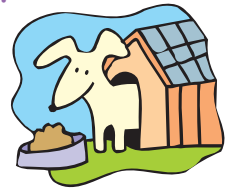
- 1) They are exposed to higher doses because they are close to the ground where pesticide concentrations are highest.
- 2) Parts of their bodies that have high chemical absorption rates, like their scrotum and armpits, are often directly exposed to pesticides.
- 3) They are likely to ingest pesticides while grooming themselves.

Be aware when pesticides are being sprayed in your neighborhood.



Keep your pet indoors when pesticides are being sprayed.

Bring your pet's food, water, dishes and toys inside.



Mild exposure to pesticides can result in inactivity, refusal to eat or drink, vomiting or diarrhea. Acute exposure can result in excessive drooling, disorientation, lack of coordination and convulsions. Contact your veterinarian immediately if you suspect your pet may be poisoned.

### Protect your companion animals

### Have a safe spring and summer

